

Ultrascreen Belt Range Hygienic De-watering & Drying





Ammeraal Beltech
is member of
European Hygienic
Engineering &
Design Group



Food Grade belts comply
with EC 1935/2004
and FDA standards
supporting your ISO
22000 requirements
(previously HACCP)

Ultrascreen PRO: Exceptional Tracking, Excellent Hygienic Properties and Lower Total Cost of Ownership

Ammeraal Beltech is proud to offer an exciting new range of Ultrascreen mesh belts. With over 75 years of experience in the conveyor belting Industry, Ammeraal Beltech knows OEM's and End Users always look for ways to decrease expenses, increase productivity and safety. That's why Ammeraal Beltech does not only offer traditional Ultrascreen mesh belts, but also the newly added Ultrascreen PRO mesh belt.

Ultrascreen PRO positive drive belts work with Soliflex PRO lug technology and offer the ultimate tracking performance, as well as lower total cost of ownership. Conveyors equipped with Ultrascreen PRO mesh belts are more cost-efficient to build, provide exceptional tracking and require less installation time and maintenance.

Total cost of ownership

Traditional friction-driven mesh belts require either crowned or uncrowned drive pulleys with v-guides. The mesh belts are made endless with the use of a stainless steel fastener. The run-in time required for tensioning friction-driven belts is longer inconveniencing both OEMs and end users. Additionally, more maintenance must be performed on these types of belts. The tension causes early v-guides, stainless steel fastener failure, and thus, a shorter lifetime of a mesh belt.

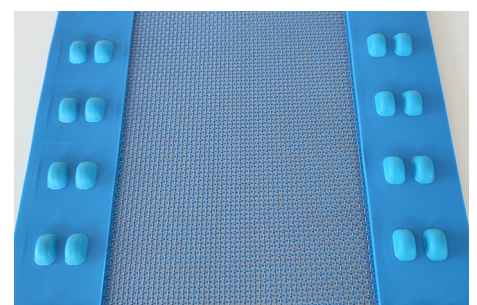
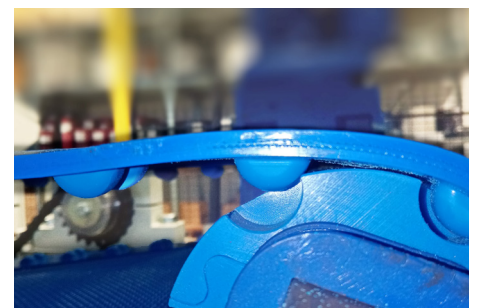
Ask your local sales representative to make a total cost of ownership calculation for your company!

Benefits

Our Ultrascreen PRO comes with a variety of different teeth and sprocket styles to fit your application. The positive drive system has the following benefits:

- The ultimate tracking performance
- Less tension applied to materials during assembly
- Reduced energy required to run your conveyor
- Plug & Play (no run-in time)
- Lower maintenance costs
- Lesser belt elongation
- Easy to clean and disinfect
- Excellent hygienic qualities, supports ISO 22000 requirements (previously HACCP)
- Reduced product contamination

The Ultrascreen PRO belts can be installed on new positive drive conveyors or as retrofits on friction-driven conveyors.





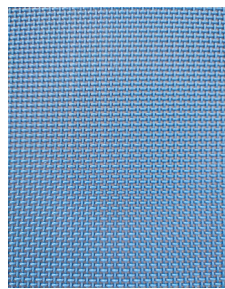
Ultrascreen (PRO) Belt Range: proven belting solutions for Fruit & Veg processing!

With a full-range of belting products, Ammeraal Beltech is able to provide well-considered solutions for all belting processes. For the processing of vegetables, fruits and fish, Ultrascreen Belts with polyester monofilaments are the proven solution.

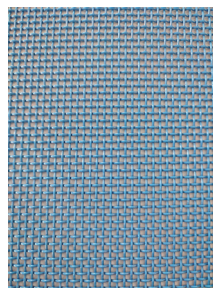
Product



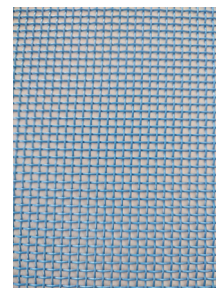
Ultrascreen 1000 µm



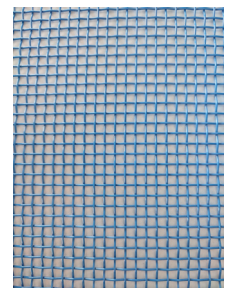
Ultrascreen 2000 µm



Ultrascreen 3000 µm



Ultrascreen 4000 µm



Description

	Ultrascreen 1000 µm	Ultrascreen 2000 µm	Ultrascreen 3000 µm	Ultrascreen 4000 µm
Available mesh	Polyester	Polyester	Polyester	Polyester
Air permeability L/dm ² /s @100Pa	3640	5080	6000	6540
Water permeability L/(m ² /s) @200mbar	2020	3350	5000	6450
Open Area	30%	45%	55%	64%
Available belt width Ultrascreen	2000 mm	2000 mm	2000 mm	2000 mm
Available belt width Ultrascreen PRO	1450 mm	1450 mm	1450 mm	NA
Available belt width Ultrascreen XMD	1450 mm	1450 mm	1450 mm	NA

● **Fresh Salad** ● **Vegetable processing** ● **Fruit processing** ● **Recycling** ● **Filtering and Sieving**

Ultrascreen XMD

Every segment of the Food Industry runs the risk of foreign body contamination, with heavy consequences that include everything from disruptive claims affecting the brand reputation, all the way to very expensive product recalls. For those reasons, we have the Ultrascreen XMD edges available. The edges are X-ray and metal-detectable. Should the edges or cleats pollute your product, it will be picked up by your metal detector.



Local Contacts

... and 150 more service contact points
at ammeraalbeltech.com

Argentina

T +54 11 4218 2906
info-ar@ammeraalbeltech.com

Australia

T +61 3 8780 6000
info-au@ammeraalbeltech.com

Austria

T +43 171728 133
info-de@ammeraalbeltech.com

Belgium

T +32 2 466 03 00
info-be@ammeraalbeltech.com

Canada

T +1 905 890 1311
info-ca@ammeraalbeltech.com

Chile

T +56 22 656 1600
info-cl@ammeraalbeltech.com

China

T +86 512 8287 2709
info-cn@ammeraalbeltech.com

Colombia

T +57 1 893 9890
info-co@ammeraalbeltech.com

Czech Republic

T +420 567 117 211
info-cz@ammeraalbeltech.com

Denmark

T + 45 7572 3100
info-dk@ammeraalbeltech.com

Finland

T +358 207 911 400
info-fi@ammeraalbeltech.com

France

T +33 3 20 90 36 00
info-fr@ammeraalbeltech.com

Germany

T +49 4152 937-0
info-de@ammeraalbeltech.com

Hungary

T +36 30 311 6099
info-hu@ammeraalbeltech.com

India

T +91 44 265 34 244
info-in@ammeraalbeltech.com

Israel

T +972 4 6371485
info-il@ammeraalbeltech.com

Italy

T +39 051 660 60 06
info-it@ammeraalbeltech.com

Japan

T +81 52 433 7400
info-jp@ammeraalbeltech.com

Luxembourg

T +352 26 48 38 56
info-lu@ammeraalbeltech.com

Malaysia

T +60 3 806 188 49
info-my@ammeraalbeltech.com

Mexico

T +52 55 5341 8131
info-mx@ammeraalbeltech.com

Netherlands

T +31 72 57 51212
info-nl@ammeraalbeltech.com

Peru

T +51 1 713 0069
info-pe@ammeraalbeltech.com

Poland

T +48 32 44 77 179
info-pl@ammeraalbeltech.com

Portugal

T +351 22 947 94 40
info-pt@ammeraalbeltech.com

Singapore

T +65 62739767
info-sg@ammeraalbeltech.com

Slovakia

T +421 255648542
info-sk@ammeraalbeltech.com

South Korea

T +82 31 448 3613-7
info-kr@ammeraalbeltech.com

Spain

T +34 93 718 3054
info-es@ammeraalbeltech.com

Sweden

T +46 (0) 10 130 96 00
info-se@ammeraalbeltech.com

Switzerland

T +41 55 225 35 35
info-ch@ammeraalbeltech.com

Thailand

T +66 2 902 2604-13
info-th@ammeraalbeltech.com

Turkey

T +90 232 877 0700
info-tr@ammeraalbeltech.com

United Kingdom

T +44 1992 500550
info-uk@ammeraalbeltech.com

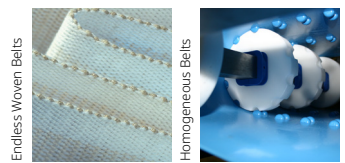
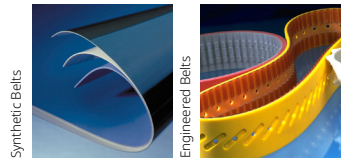
United States

T +1 847 673 6720
info-us@ammeraalbeltech.com

Vietnam

T +84 8 376 562 05
info-vn@ammeraalbeltech.com

**Expert advice, quality solutions
and local service
for all your belting needs**



General contact information:

Ammeraal Beltech
P.O. Box 38
1700 AA Heerhugowaard
The Netherlands

T +31 (0)72 575 1212
info@ammeraalbeltech.com

ammera.com