



Easier & faster
maintenance



Less
downtime

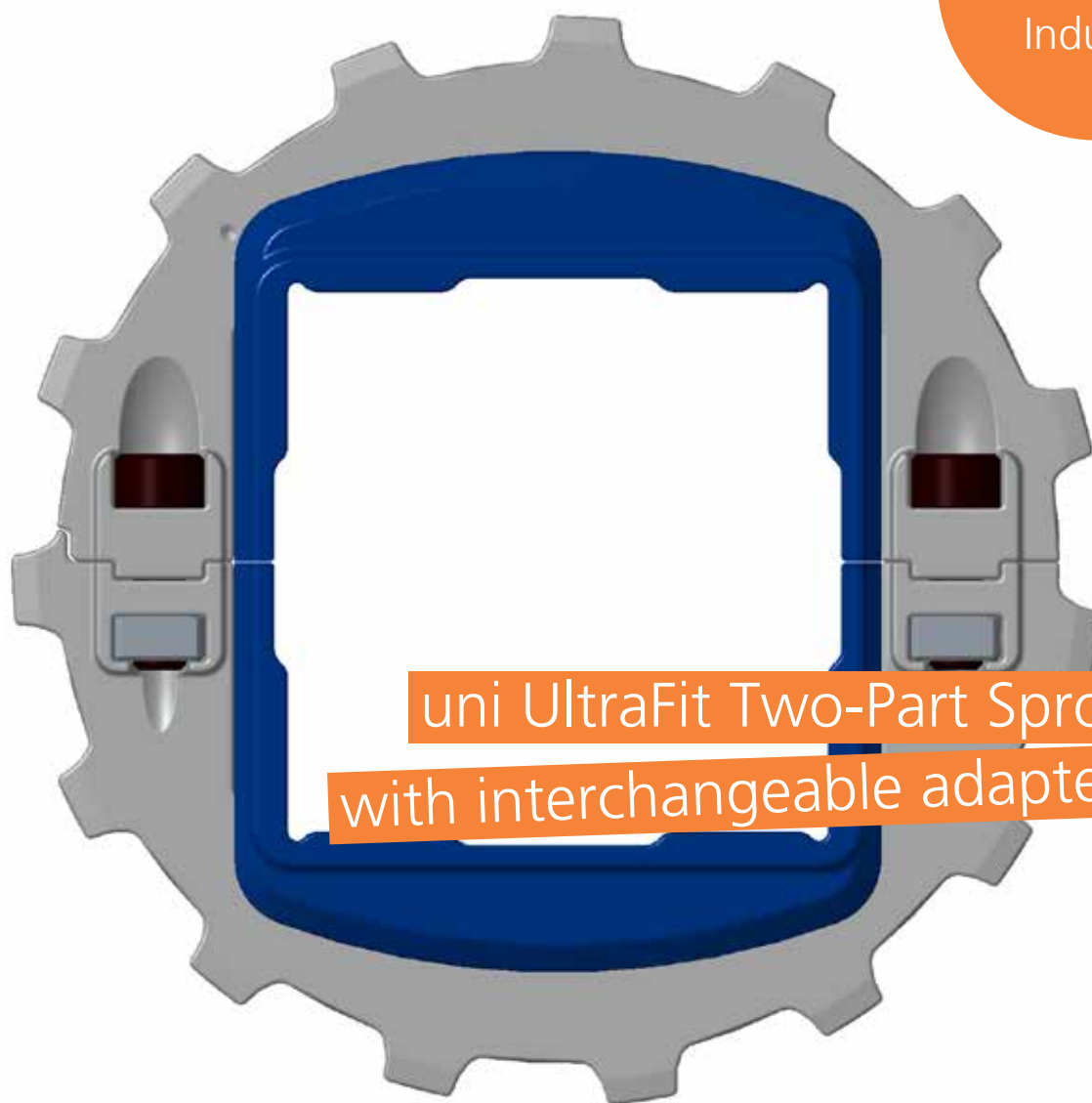


Less
disruption



Reduced
costs

New for
the Corrugated
Industry



uni UltraFit Two-Part Sprockets
with interchangeable adapters

UltraFit Two-Part Sprocket System

– to reduce your maintenance costs

UltraFit Two-Part Sprocket System

with interchangeable adapters

The most unique and revolutionary feature in the uni UltraFit Two-Part Sprockets is the built-in adapters. The adapters make it possible to install the uni UltraFit Two-Part sprocket on different shaft sizes.

The wide adapters serving as spacers automatically guarantee perfect distance between the sprockets, ensuring ideal alignment of sprockets across the belt width.

Adapters are available for popular bore sizes and in two widths: 25.0 mm (0.98 in) and 76.0 mm (2.99 in).



UltraFit Two-Part Sprocket System:
sprocket and adapter

Unique benefit

– adapters only available with

UltraFit Two-Part Sprocket System

Product family	Teeth	Bore size	
		mm	in
Ammeraal Beltech Modular	12	38.1	1.50
		40.0	1.57
	13	38.1	1.50
		40.0	1.57
	15	38.1	1.50
		40.0	1.57
		60.0	2.36
		63.5	2.50
	16	38.1	1.50
		40.0	1.57
		60.0	2.36
		63.5	2.50
18	38.1	1.50	
	40.0	1.57	
	60.0	2.36	
	63.5	2.50	
19	38.1	1.50	
	40.0	1.57	
	60.0	2.36	
	63.5	2.50	

Time-saving and cost-cutting innovation

Sprockets are crucial components in belt systems, and replacing them can cause downtime. At Ammeraal Beltech, our drive to create innovative solutions, that reduce maintenance costs and downtime, has led to the development of the UltraFit Two-Part Sprocket System with interchangeable adapters.

The uni UltraFit Two-Part Sprockets are available in a wide range of tooth numbers and popular Metric and Imperial bore sizes to fit most existing systems.

Ammeraal Beltech Modular Belts using the new sprocket include:

- uni JCB
- uni QNB
- uni LPB

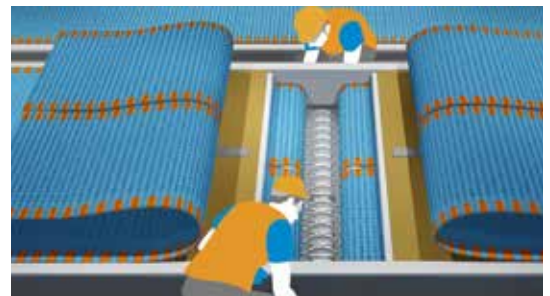


Innovative solution
 – keeps downtime to a minimum

Traditional Sprockets

Difficulties when replacing traditional sprockets include:

- Complicated replacement procedures leading to long downtime.
- The lifting / removal of heavy components requires the help of additional persons.
- A lack of working space in which to carry out the various steps of this operation.



NEW uni UltraFit Two-Part Sprockets

Advantages when using the UltraFit System:

- Quick and simple installation / replacement of sprockets.
- Easy re-alignment of the belt and better subsequent performance, thanks to adapters.
- A one-person job, without heavy lifting.

All this adds up to:

- **Outstanding performance**
- **Reliability**
- **Efficiency**



Easier & faster
 maintenance



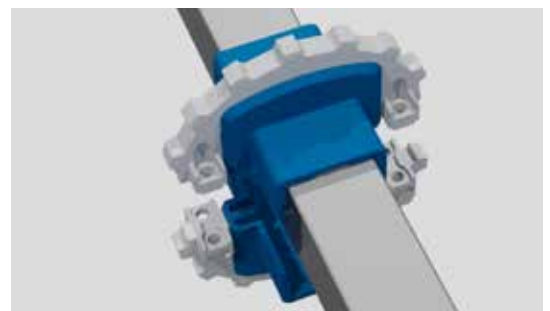
Less
 downtime



Less
 disruption



Reduced
 costs



Reduces maintenance costs
 and total cost of ownership

Want to know more? Contact us

Get in touch with your nearest Ammeraal Beltech sales office or visit www.ammeraalbeltech.com to locate your local service centre, and we'll be glad to help.

Local Contacts

Australia

T +61 3 9555 7922
info-au@ammeraalbeltech.com
www.rydell.com.au

Austria

T +43 171728 133
info-de@ammeraalbeltech.com
www.ammeraalbeltech.at

Belgium

T +32 2 466 03 00
info-be@ammeraalbeltech.com
www.ammeraalbeltech.be

Canada

T +1 905 890 1311
info-ca@ammeraalbeltech.com
www.ammeraalbeltech.com

Chile

T +56 2 233 12900
info-cl@ammeraalbeltech.com
www.ammeraalbeltech.cl

China

T +86 512 8287 2709
info-cn@ammeraalbeltech.com
www.ammeraalbeltech.com.cn

Czech Republic

T +420 567 117 211
info-cz@ammeraalbeltech.com
www.ammeraalbeltech.cz

Denmark

T +45 7572 3100
info-dk@ammeraalbeltech.com
www.unichains.com

Finland

T +358 207 911 400
info-fi@ammeraalbeltech.com
www.ammeraalbeltech.fi

France

T +33 3 20 90 36 00
info-fr@ammeraalbeltech.com
www.ammeraalbeltech.fr

Germany

T +49 4152 937-0
info-de@ammeraalbeltech.com
www.ammeraalbeltech.de

Hungary

T +36 30 311 6099
info-hu@ammeraalbeltech.com
www.ammeraalbeltech.hu

India

T +91 44 265 34 244
info-in@ammeraalbeltech.com
www.ammeraalbeltech.com

Italy

T +39 051 660 60 06
info-it@ammeraalbeltech.com
www.ammeraalbeltech.it

Luxembourg

T +352 26 48 38 56
info-lu@ammeraalbeltech.com
www.ammeraal-beltech.lu

Malaysia

T +60 3 806 188 49
info-my@ammeraalbeltech.com
www.ammeraalbeltech.com

Netherlands

T +31 72 57 51212
info-nl@ammeraalbeltech.com
www.ammeraalbeltech.nl

Poland

T +48 32 44 77 179
info-pl@ammeraalbeltech.com
www.ammeraalbeltech.com

Portugal

T +351 22 947 94 40
info-pt@ammeraalbeltech.com
www.ammeraalbeltech.pt

Singapore

T +65 62739767
info-sg@ammeraalbeltech.com
www.ammeraalbeltech.com

Slovakia

T +421 2 55648541-2
info-sk@ammeraalbeltech.com
www.ammeraalbeltech.sk

South Korea

T +82 31 448 3613-7
info-kr@ammeraalbeltech.com
www.ammeraalbeltech.co.kr

Spain

T +34 93 718 3054
info-es@ammeraalbeltech.com
www.ammeraalbeltech.es

Sweden

T +46 44 780 3010
info-se@ammeraalbeltech.com
www.ammeraalbeltech.se

Switzerland

T +41 55 2253 535
info-ch@ammeraalbeltech.com
www.ammeraalbeltech.ch

Thailand

T +66 2 902 2604-13
info-th@ammeraalbeltech.com
www.ammeraalbeltech.com

United Kingdom

T +44 1992 500550
info-uk@ammeraalbeltech.com
www.ammeraalbeltech.co.uk

United States

T +1 847 673 6720
info-us@ammeraalbeltech.com
www.ammeraalbeltech.com

Vietnam

T +84 8 376 562 05
info-vn@ammeraalbeltech.com
www.ammeraalbeltech.com.vn

Global Headquarters:

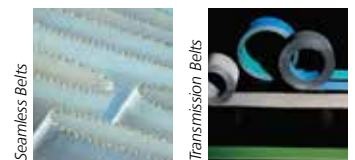
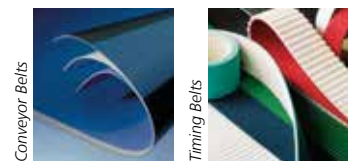
Ammeraal Beltech Holding B.V.

P.O. Box 38
1700 AA Heerhugowaard
The Netherlands

T +31 (0)72 575 1212
F +31 (0)72 571 6455

info@ammeraalbeltech.com
www.ammeraalbeltech.com

Expert advice, quality solutions
and local service
for all your belting needs



... and 150 more service contact points on www.ammeraalbeltech.com