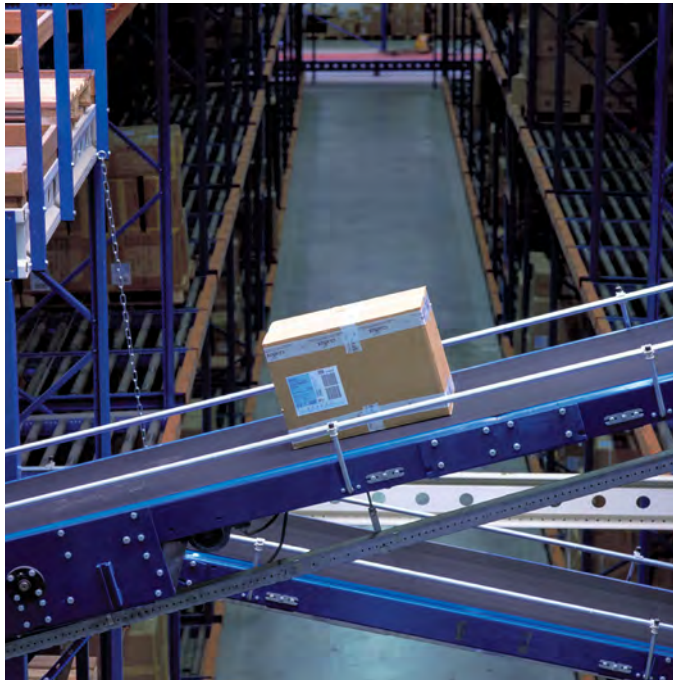
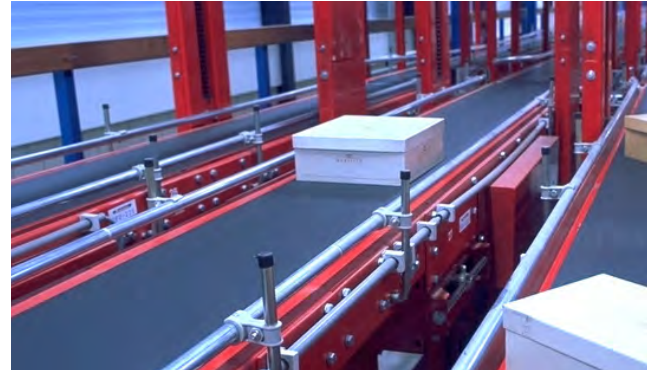


AU

Belts for the Logistics Industry





An industry on the move – and a partner that helps you deliver

Today's world is moving faster than ever, and the Logistics Industry keeps it all flowing. What's more, logistics itself is changing. Whether it's the rise of just-in-time inventory management and shorter lead times in manufacturing or the increase in delivery volume brought about by thriving e-commerce, the demand for efficiency and speed in all aspects of the industry continues to grow. Today, accurate and quick order-picking and distribution are key to successful business performance. Maintaining your operations at optimal standards means creating the most reliable and highest-quality system possible, and for that, you need the best partner you can find.

At Ammeraal Beltech, we have been providing belting solutions to the Logistics Industry for years. Our experience, our technological know-how and our close collaboration with a wide range of logistics businesses all mean we can find the right belt for every process in your operation. Moreover, Ammeraal Beltech belts offer the highest availability and reliability together with the lowest power consumption and maintenance downtime.

Logistics is all about being able to deliver, and that's what our belting solutions do – across a wide range of styles, sizes and materials, our belts set new standards for performance in every phase, from unloading to conveying to sorting to loading up again. We are a One-Stop Belt Shop, offering everything from tangentially-driven roller conveyors to curved, straight or even pallet conveyors.

Among the special features that make our belts stand out are:

- Energy-saving concepts to significantly reduce power consumption
- Low-noise properties for quieter, better workplace conditions
- Flame-retardant and anti-static material to minimise risk of fire
- Impact-resistant, high-friction options for damage reduction
- Abrasion-resistant, temperature-resistant and weatherproof material for reliable performance under all conditions



local stock
quick belt replacement
short delivery time
24/7 service



Energy Saving Concept

*Less power consumption
Lower operating costs
Efficient and safe operation*

System design factors of Ammeraal Beltech's Energy Saving Concept assist in providing the best energy reducing solution for logistics conveyors.



- Belts for every process and every Logistics facility

Loading/unloading - telescopic loader



Loading and unloading parcels directly from vehicles with Ammeraal Beltech telescopic conveyor belts simplifies receiving and delivery and it saves time and resources, too. Our telescopic conveyors extend into the vehicle and collapse away after use.



With outstanding lateral stability, chemical resistance and thorough weatherproofing for inside/outside running, our specialised belts can withstand heavy loads, oil and grease contamination in all weather conditions.

Unloading - Automatic Parcel Singulator



An Automatic Parcel Singulator (APS) transforms a simple bulk-flow system into an ergonomically and operationally efficient system, giving you downstream and upstream control of parcel flow. However, to achieve this efficiency, your APS will require a wide variety of belts working in synch together.



To keep your APS running, you'll need a number of different belts (e.g., flat belts, roller drive belts, and PU or PVC-coated belts), all capable of delivering high performance and durability. Fortunately, Ammeraal Beltech is your One-Stop Belt Shop and we can provide, install and service all the different belts that your APS requires.

Sorting - Cross-Belt Sorters



The Logistics industry moves fast or it fails. Cross-Belt and Tilt-Tray Sorters are right at home in the high-speed logistics environment, helping to minimise transfer times while maximising conveying performance.

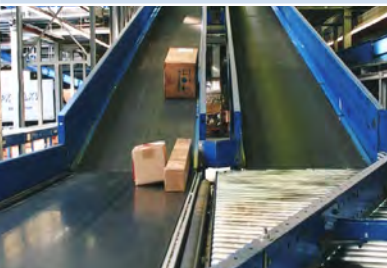


Our belting solutions feature extremely reliable flame-retardant belts with long-wearing top covers and excellent lateral stability ready to meet your sorting challenges.



● Impact Resistant, Low Noise and Flame Retardant ●

Accumulation



The accumulation stage can be particularly hard on belt longevity. Ammeraal Beltech belting solutions for accumulation are specifically designed to handle the extra wear and tear that occurs during this phase of transportation.



Our belting solutions for accumulation have hard polymer top covers optimized to provide both the ideal surface grip and durability necessary for this stage of the conveying process.

Transportation - merge and takeaway



Junctions require narrow tolerances and small drum diameters, but they don't have to be problem spots - Ammeraal Beltech's 45° angled merge belts are perfect for the job and are also resistant to high temperatures.



Our belts offer very high lateral stability, cutting down on tracking difficulties, and outstanding abrasion resistance, giving them best-in-class longevity.

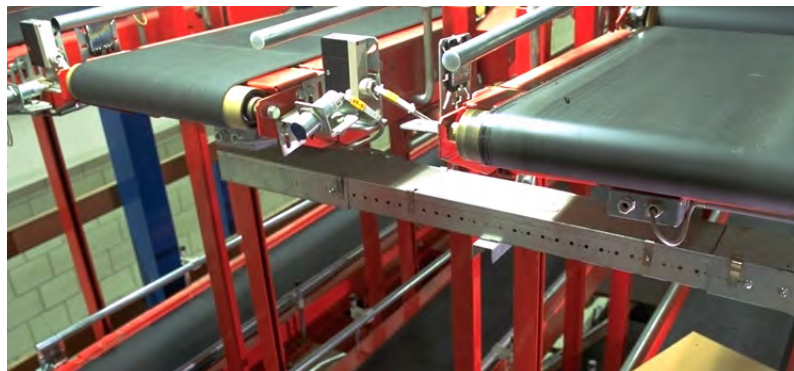
Transportation - line conveyors



At the heart of the logistics operation, line conveyors often do the bulk of the work. They also consume much of the energy used. Our low running-side coefficient of friction significantly reduces the power required to drive our belts.

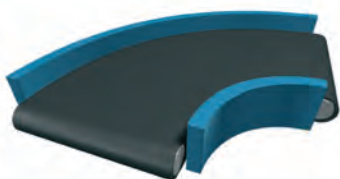


We can offer special profiles and other modifications for increased grip on inclines and declines.



● **Reduced Energy Costs** ● **Less Downtime** ●

**Transportation
- curve conveyors**

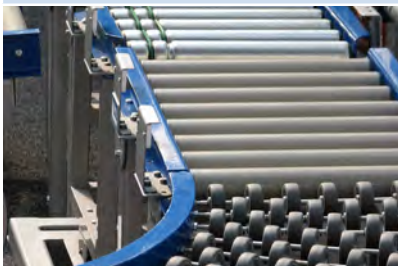


Curved belts need to be strong enough to handle whatever your operation brings them. Our extra-strong curve belts can handle loads up to **551 lbs.**



Our curved belts are designed to handle high-speed power turns, saving you time and operational space. What's more, they're also low-noise, for a better working environment.

Transportation: roller conveyors



Live roller conveyor systems dominate the Logistics industry; they can be found in nearly every process zone. So, too, can our RAPPLON Flat Belts, designed for dimensional stability and high load and torque absorption.



What's more, the RAPPLON range offers two additional advantages – our tangential drive belts offer significant energy savings and lower energy costs, and our Quick-Splice technology eliminates the long downtime required for roller system belt replacement. For roller to roller conveyors, we also offer round belts, which can also be spliced on-site quickly and easily for a minimum loss of time.

Warehousing - pallet handling



Strength, durability and safety are of paramount concern with floor-level warehouse conveyors, particularly when it may be necessary for employees to step on, off and in between moving belts.



Our uni JCB Modular Belts can carry the load – and your warehouse staff – safely and reliably.

Local Contacts

... and 150 more service contact points
at ammeraalbeltech.com/au

VICTORIA - Head Office & Administration

51 Bazalgette Crescent
Dandenong South VIC 3175
Ph (03) 8780 6000
salesvic@rydell.com.au

QUEENSLAND - Modular Division

8 Machinery Street
Darra QLD 4076
Ph (07) 3564 4600
salesqld@rydell.com.au

VIC - HASTINGS

Factory 16/24 Kanowna Street
Hastings VIC 3915
Ph (03) 5979 4447
salesvic@rydell.com.au

NEW SOUTH WALES

22 Binney Road
Kings Park NSW 2148
Ph (02) 8664 9800
salesnsw@rydell.com.au

SOUTH AUSTRALIA

17-19 Churchill Road North
Dry Creek SA 5094
Ph (08) 8216 7000
salessa@rydell.com.au

NEW SOUTH WALES

New England/North West Region
43 Macleay Way
Invergowrie NSW 2350
Ph 0418 513 998
salesnsw@rydell.com.au

QUEENSLAND

12 Machinery Street
Darra QLD 4076
Ph (07) 3564 4600
salesqld@rydell.com.au

WESTERN AUSTRALIA

29 Irvine Drive
Malaga WA 6090
Ph (08) 9249 3777
saleswa@rydell.com.au

VIC - BAIRNSDALE

Factory 3/79 Macleod Street
Bairnsdale VIC 3875
Ph 0487 555 118
salesvic@rydell.com.au

Expert advice, quality solutions
and local service
for all your belting needs



45+ years servicing Australia | 10 sales & services centres | Australia's One-Stop Belt Shop

General contact information:

Ammeraal Beltech

P.O. Box 38
1700 AA Heerhugowaard
The Netherlands

T +31 (0)72 575 1212
info@ammeraalbeltech.com

ammerga.com